

ALGORITHM

Design by Toan Nguyen.

VIBIA

Reference

0865.

Application

Hanging lamps

Installation type

Surface

Description

Pendant light fitting designed by Toan Nguyen. Composed of a collection of hand blown glass spheres with LED light source suspended at different heights, anchored to the ceiling via a floating tubular structure. Available with ceiling rose or built-in. The finishes are matt graphite and matt white.

Diffuser

Polycarbonate diffuser

Materials

Sphere: Blown glass
Glass fastening: Aluminum
Diffuser: Polycarbonate
Pendant structure: Steel

Finish

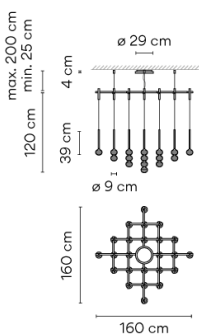


0865-18 Graphite (ADAPTA RF 9913 WX)



0865-93 White (RAL 9016)

Sketch



Electrical characteristics

25 x LED 3,15W 1050mA



Total 78.8 W



Light source: 2700K CRI >80 7807 lm 99 lm/W

Fixture: 3599 lm 0 lm/W

Driver included: CC - Constant Current 1050 mA 100-240V 50/60Hz

Electronic dimming DALI 1-10V Push

ficha.fichatecnicaproducto.regulacion.opcional Casambi

Technical characteristics

- Request built-in canopy at www.vibia.com

- The steel cables that go from the structure to the ceiling are the only ones that allow the height of the lamp to be adjusted. The installation manual describes how to do this and how to cut the cables.

Physical characteristics

2 Box / 0.18 x 1.69 x 1.69 m. / Vol. 0.7268 m³ /

Gross weight 27.3 kg. / Net weight 20.3 kg.

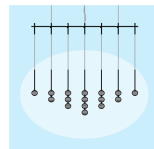
Installation and assembly

Please, see the installation manual

Light distribution

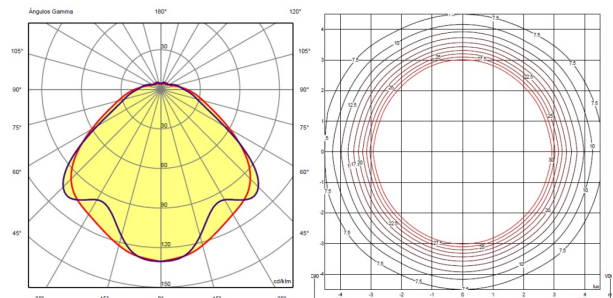
General lighting

Lamp for general lighting that equally distributes the light in all directions.



Photometric data

Total flux : 4059 lm



Certificates

